



# ACME TO ELK RAPIDS PUBLIC OPEN HOUSE

FEBRUARY 27, 2019

SCOTT POST, PE  
MATT LEVANDOSKI, PLA

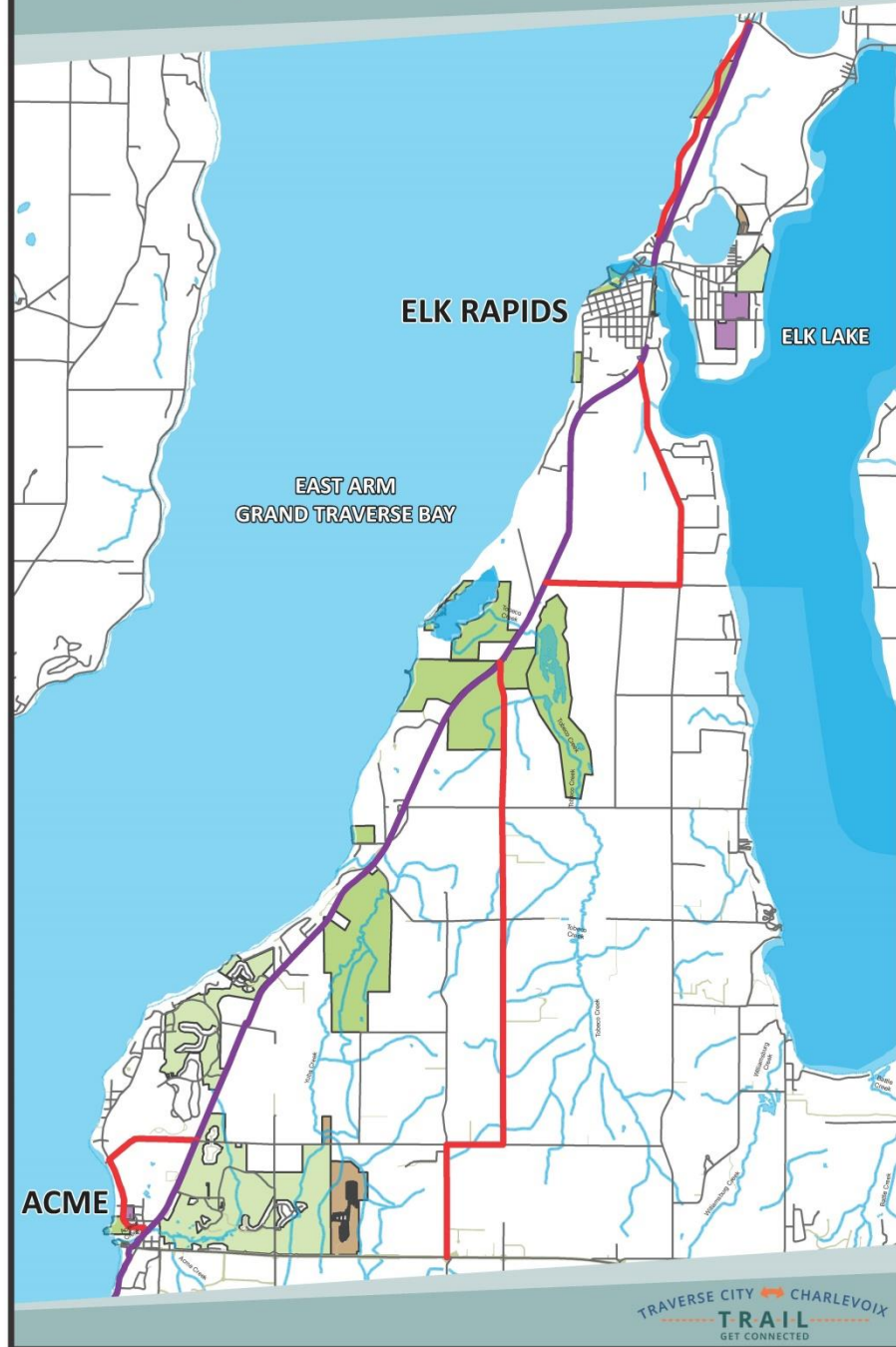
Route  
Alternatives  
and Preferred  
Alignment

Prein&Newhof

# INTRODUCTION

- Inventory
  - Route Tour
  - Map/GIS Path Collection
  - Review Previous Work
- Evaluate for Constructability
- Evaluate for Trail Experience
- Evaluate and Review Public/Stakeholder Feedback

Overall Route Map

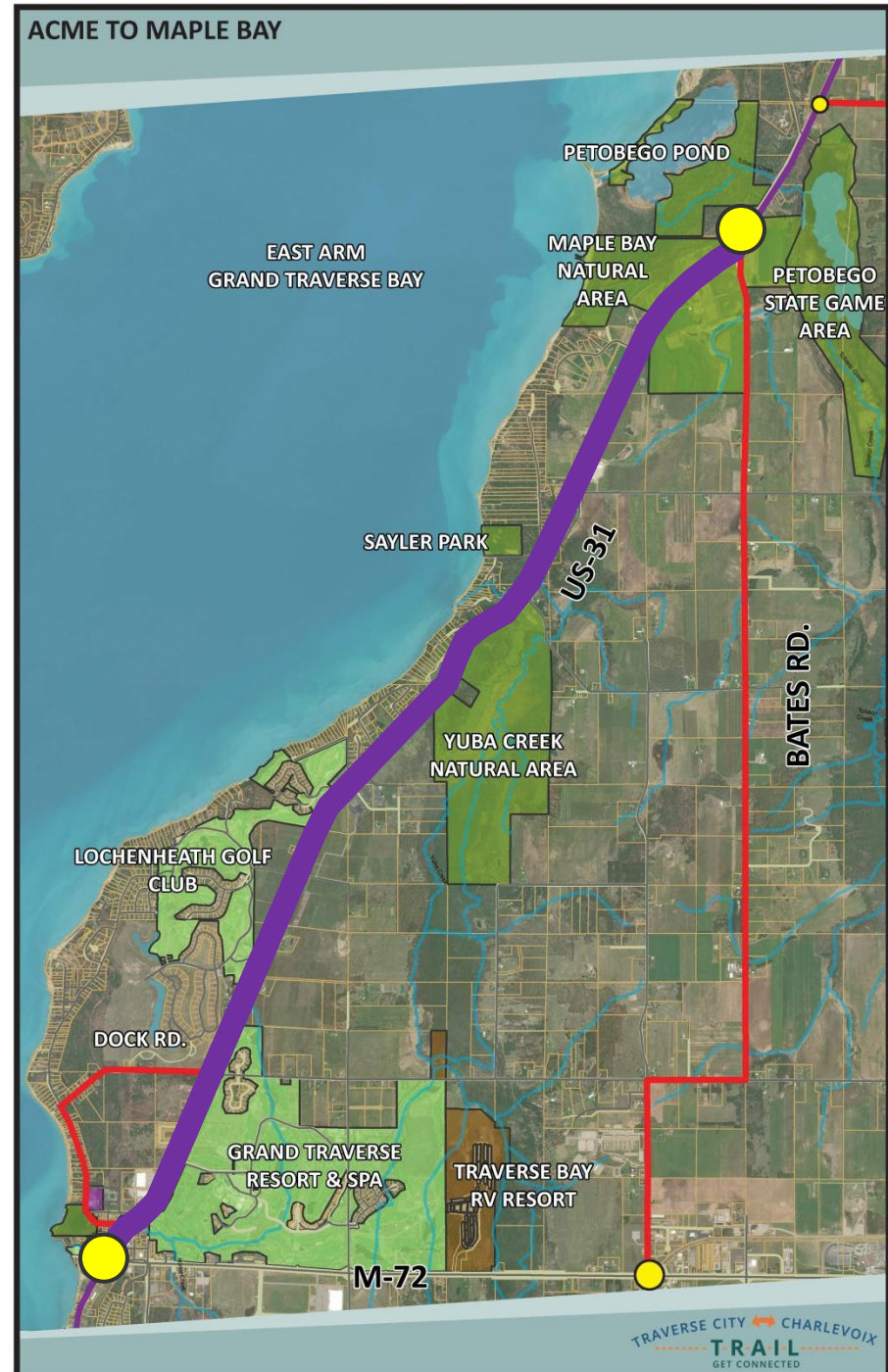


# ACME TO MAPLE BAY

## Preferred Route : US-31 (West Side)

### Reasons for selection

- Wide R.O.W. to allow for more separation from vehicles.
- Less adjacent agriculture
- Provides access to several natural areas:
  - Deepwater Point
  - Saylor Park
  - Maple Bay Natural Area
  - Petobego Pond
- Provides adjacent residential and commercial properties access to the trail system
- No need to cross US-31



# ACME TO MAPLE BAY

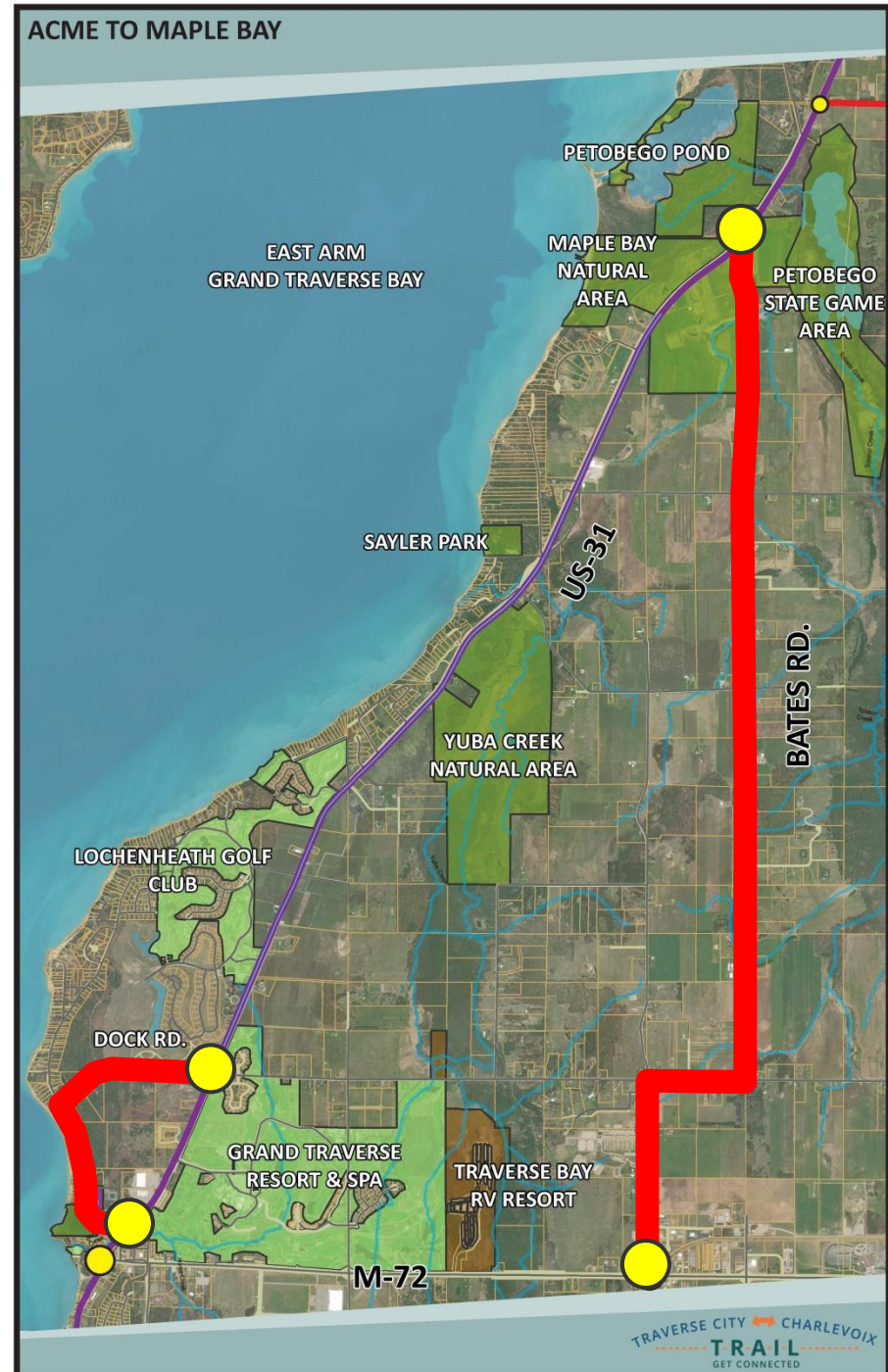
## Alternative Route Evaluation

### Bates Rd. Route

- Requires grading easements
- Needs about 5,000 sq.ft. of retaining wall
- Needs 600' of boardwalk
- Powerlines limit trail placement
- Proximity to homes
- Steep terrain in certain areas
- Wetlands present

### Dock Rd. Route

- Curvy Road with high road speeds
- Conflicts with motor vehicles
- Steep terrain in certain areas
- Dense residential area

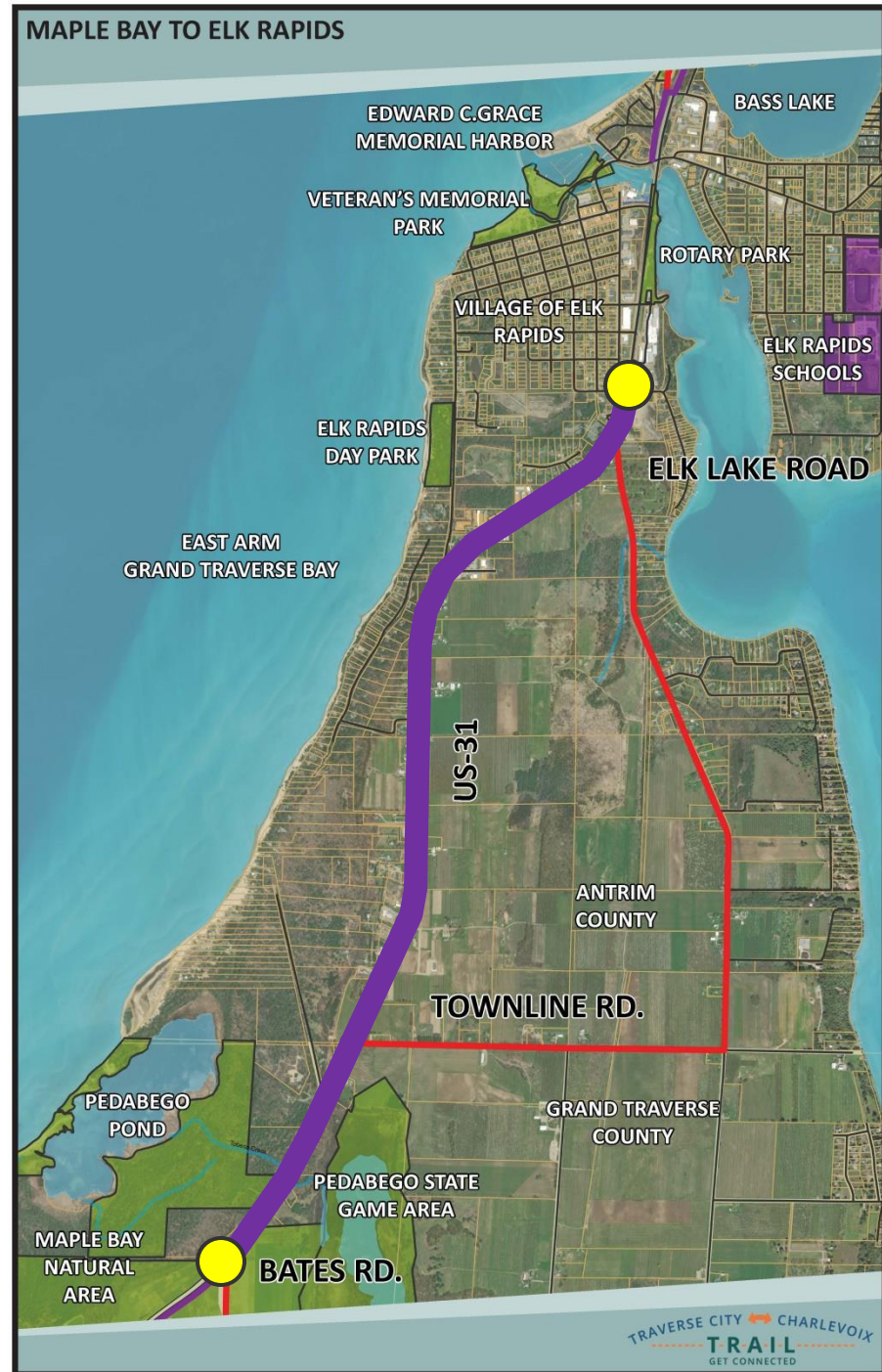


# MAPLE BAY TO ELK RAPIDS

## Preferred Route : US-31 (West Side)

### Reasons for selection

- Wide R.O.W. to allow for more separation from vehicles.
- Less adjacent agriculture
- Provides access to several natural areas:
  - Petobego State Game Area
  - Petobego Pond
- Provides adjacent residential and commercial properties access to the trail system
- No need to cross US-31
- Less easements and retaining wall required.

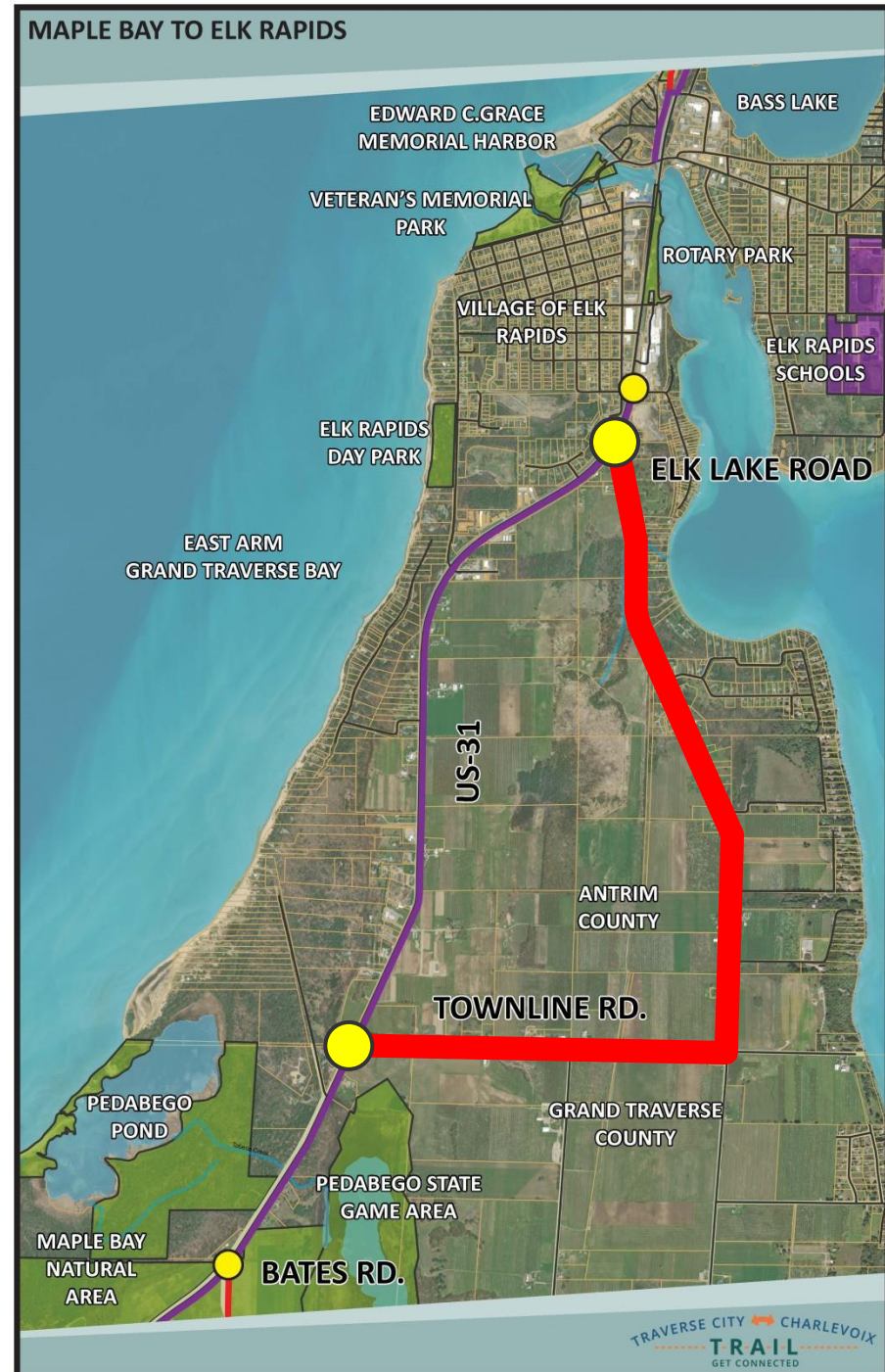


# MAPLE BAY TO ELK RAPIDS

## Alternative Route Evaluation

### Elk Lake Rd./ Townline Rd. Route

- Wetlands present
- Proximity to homes and orchards
- Tree removal would be required
- Easements required



# ELK RAPIDS TO WILLIAMS RD.

## Route Options (preferred TBD)

### US-31 East

- Wider R.O.W
- Further from homes

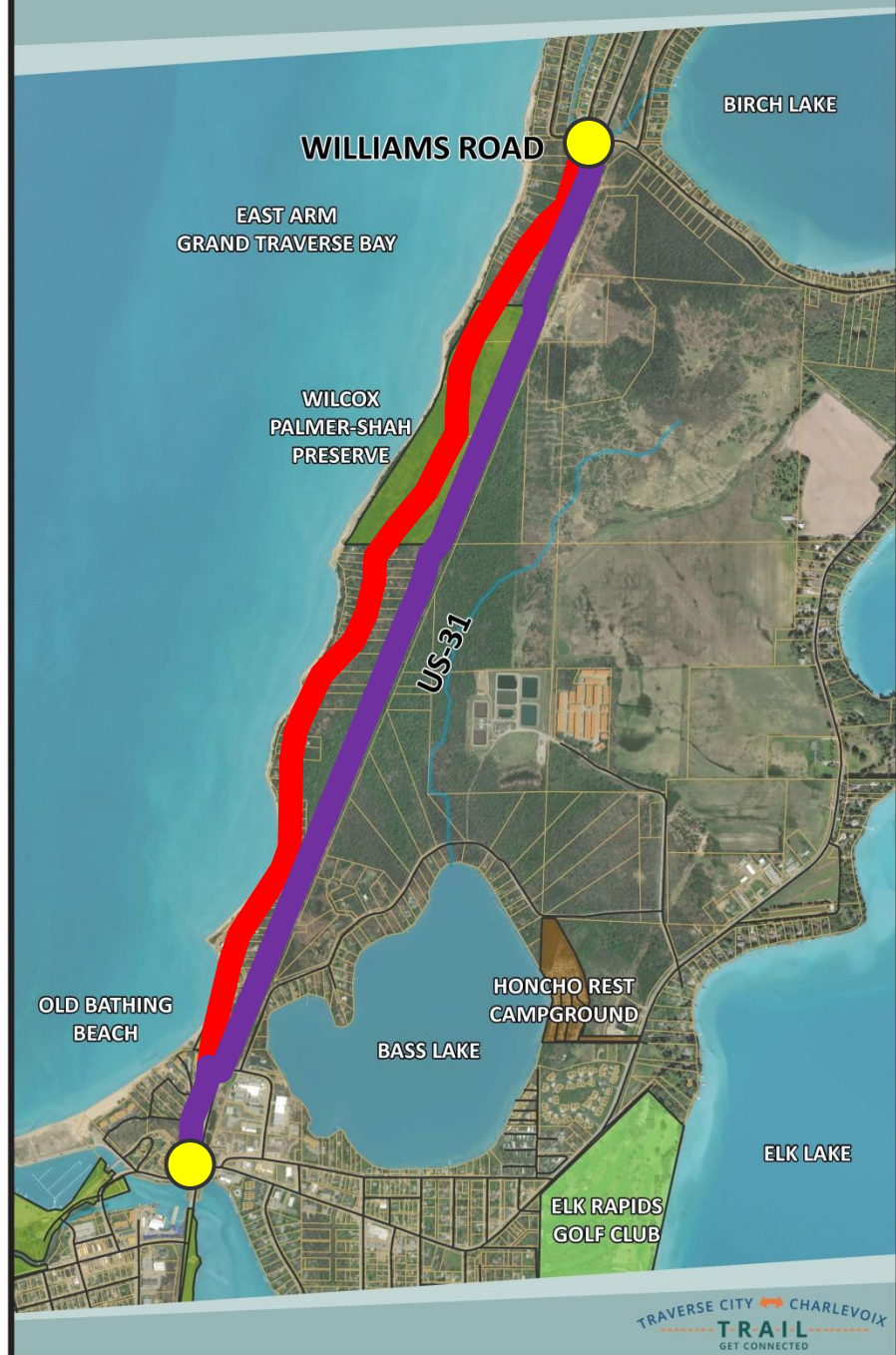
### US-31 West

- Narrower R.O.W
- Closer to homes

### N. Bayshore Drive

- Access to Preserve
- Separated facility not possible
- Share-Road has design limitations

ELK RAPIDS TO WILLIAMS RD.





**THANK YOU !**

**SCOTT POST, PE  
MATT LEVANDOSKI, PLA**

**Route  
Alternatives  
and Preferred  
Alignment**

**Prein&Newhof**